



Welcome to the Signal, ASPB's monthly membership email  
(formerly ASPB Member Chatter)

## Welcome to the *Signal*

ASPB has a long history of supporting our members in a variety of ways, and our goal is to continue this tradition. Through this evolved version of our monthly membership email, we hope to keep you up-to-date on everything you need to know as a plant biologist.

Our support for the plant biology community is made possible in part through financial support that comes from your membership. **Thank you for being an ASPB member!**

Please feel free to [reach out to us](#) with your ideas, feedback, and suggestions.

ADVERTISEMENT



### ADVOCACY

#### [White House Announces Proposed Update to the U.S. Regulatory System for Biotechnology Products](#)

EPA, FDA, and USDA unveil two documents as part of the administration's continuing effort to modernize the federal regulatory system for biotechnology products.

- [ASPB Response](#)

### In this issue

[Advocacy](#)

[Research](#)

[Grants & Funding](#)

[Education](#)

[People in the News](#)

[ASPB Updates](#)



### JOBS

#### [Division Director, Division of Molecular and Cellular Biosciences, BIO](#)

National Science Foundation  
Arlington, VA, US

#### [Director of the Botanic Garden](#)

Smith College  
Northampton, MA, US

#### [Dean, College of Natural and Health Sciences](#)

University of Tampa,  
Tampa, FL, US

#### [Assistant Professor - Plant Sciences, Quantitative Genetics/Statistical Genomics](#)

**Vermont GMO Labeling Law**

Disputing parties in the Vermont GMO labeling lawsuit agree to dismissal.

Montana State University  
Bozeman, MT, US

[Search/browse all jobs on  
\*Plantae\*](#)

**GMO Labeling Editorial in Food Network News**

"Clearly the uniform standard to be created by the new federal law is a far superior alternative to the patchwork of state legislation that developed in its absence."

**ASPB Calendar****ASPB Master Educator  
Program Deadline**

October 31, 2016

**Phenome 2017**

February 10-14, 2017  
Hilton Conquistador Resort  
Tucson, AZ

**SURF Application Deadline**

March 1, 2017

[View all upcoming ASPB  
deadlines and events](#)

**RESEARCH****Swept Away: Protein Mobility in the Phloem**

This [In Brief](#) by science editor [Jennifer Mach](#) in *The Plant Cell* summarizes a new article by [Paultre et al.](#) exploring how proteins move through the phloem.

**Laticifer Function and Development**

This summary describes a paper by [Castelblanque et al.](#) in the October 2016 issue of *Plant Physiology*.

**Join the Discussion in Plantae: Describe Your  
Work/Research in One Sentence****"How to Read a Scientific Paper" and "Case  
Study: Reading a *Plant Physiology* Article"****GRANTS & FUNDING****Call for Nominations: National Academy of  
Sciences Prize in Food and Ag Sciences**

NAS is accepting nominations of mid-career researchers for the NAS Prize in Food and Ag Sciences.

**Deadline: 10/3/16**

**Call for Nominations: 2017 Alan T. Waterman  
Award**

NSF is accepting nominations of early career researchers for the 2017 Alan T. Waterman Award.

**Deadline: 10/21/16**

**DARPA-Biological Technologies Office Funding  
Opportunity on Gene Editing**

The Safe Genes program will create biological capabilities that enable the safe pursuit of advanced genome editing applications and protect against potential engineered genetic threats.

**ASPB News****READ THE LATEST ISSUE**

## EDUCATION

### [Back to School? Educational Resources for Plant Biology: Activities and Short Videos](#)

### [Educational Resources for Plant Biology: Longer Videos Including TED Talks, iBiology, and Gatsby Plants Summer School Lectures](#)

## PEOPLE IN THE NEWS

### [Sarah Wyatt Named a 2016 Ohio University Presidential Research Scholar](#)

A professor of environmental & plant biology, Sarah Wyatt is one of five faculty members named as a 2016 Ohio University Presidential Research Scholar for excellence.

### [Kevin Folta Wins Borlaug CAST Communication Award](#)

Kevin Folta will receive the Borlaug CAST Communication Award on October 12, 2016 in Ames, IA as part of the 2016 World Food Prize Symposium.

## ASPB UPDATES

### [Phenome 2017: Connecting the Bioeconomy February 10-14, 2017](#)

Collaborations among biologists and computational and information scientists are already redefining the frontiers of our understanding of plant function. ASPB is hosting the first-ever Phenomes meeting in Tucson, AZ, in February.

### [Undergraduates! It's Time to Start Thinking About 2017 Summer Research](#)

ASPB sponsors a competitive program that provides stipends for summer undergraduate research fellows (SURFers) in plant biology.

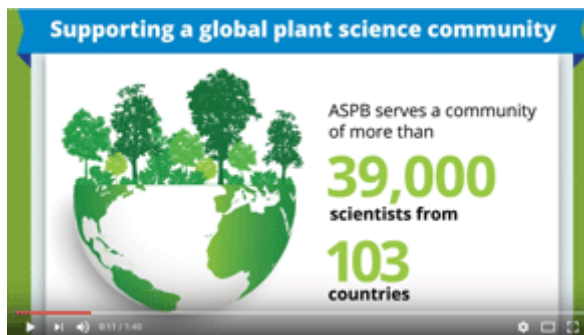
### [Learn How ASPB Supports the Plant Science Community](#)



**Give your students the gift of ASPB membership (at a discounted rate) and help them thrive.**

ASPB membership opens doors, provides access to career opportunities, education and other valuable benefits.

**[Sign up now](#)**



American Society  
of Plant Biologists

[www.aspb.org](http://www.aspb.org) | [info@aspb.org](mailto:info@aspb.org)



Copyright 2016 [ASPB](#)

This email was sent by **%%Member\_Busname%%**  
%%Member\_Addr%%, %%Member\_City%%, %%Member\_State%% %%Member\_PostalCode%%  
%%Member\_Country%%

[Update Profile](#)

You are receiving this email because you are a member of ASPB. If you do not wish to receive our newsletter emails in the future, please [unsubscribe](#) here.